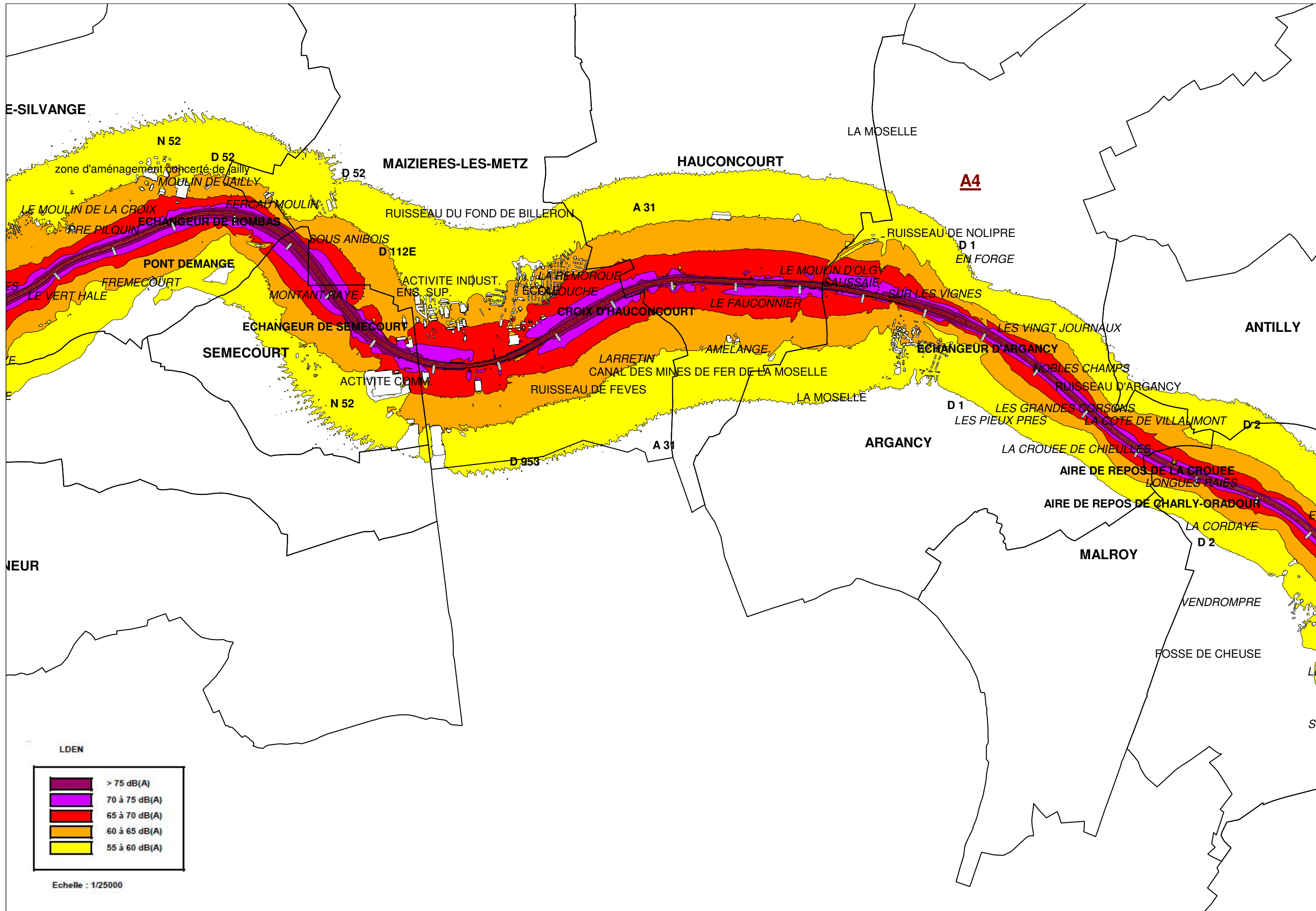


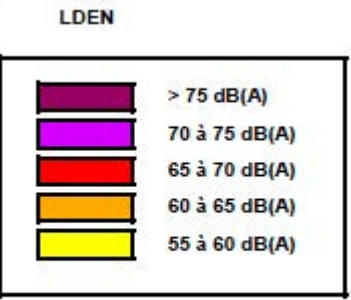
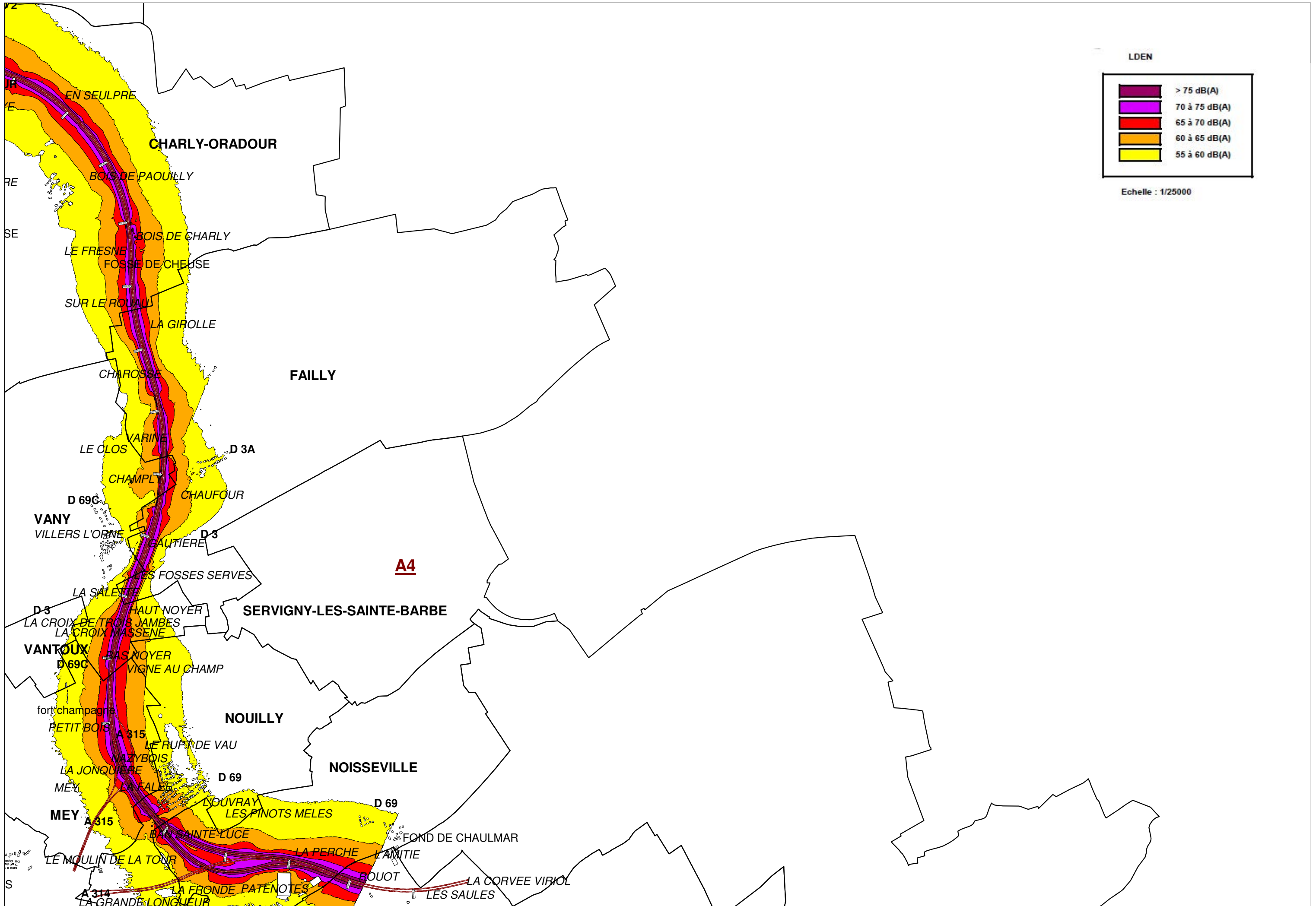
Echelle : 1/25000



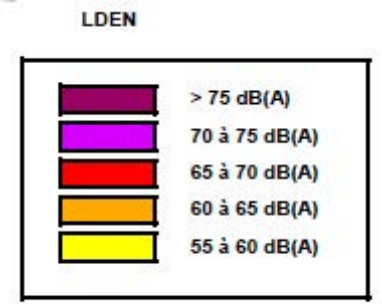
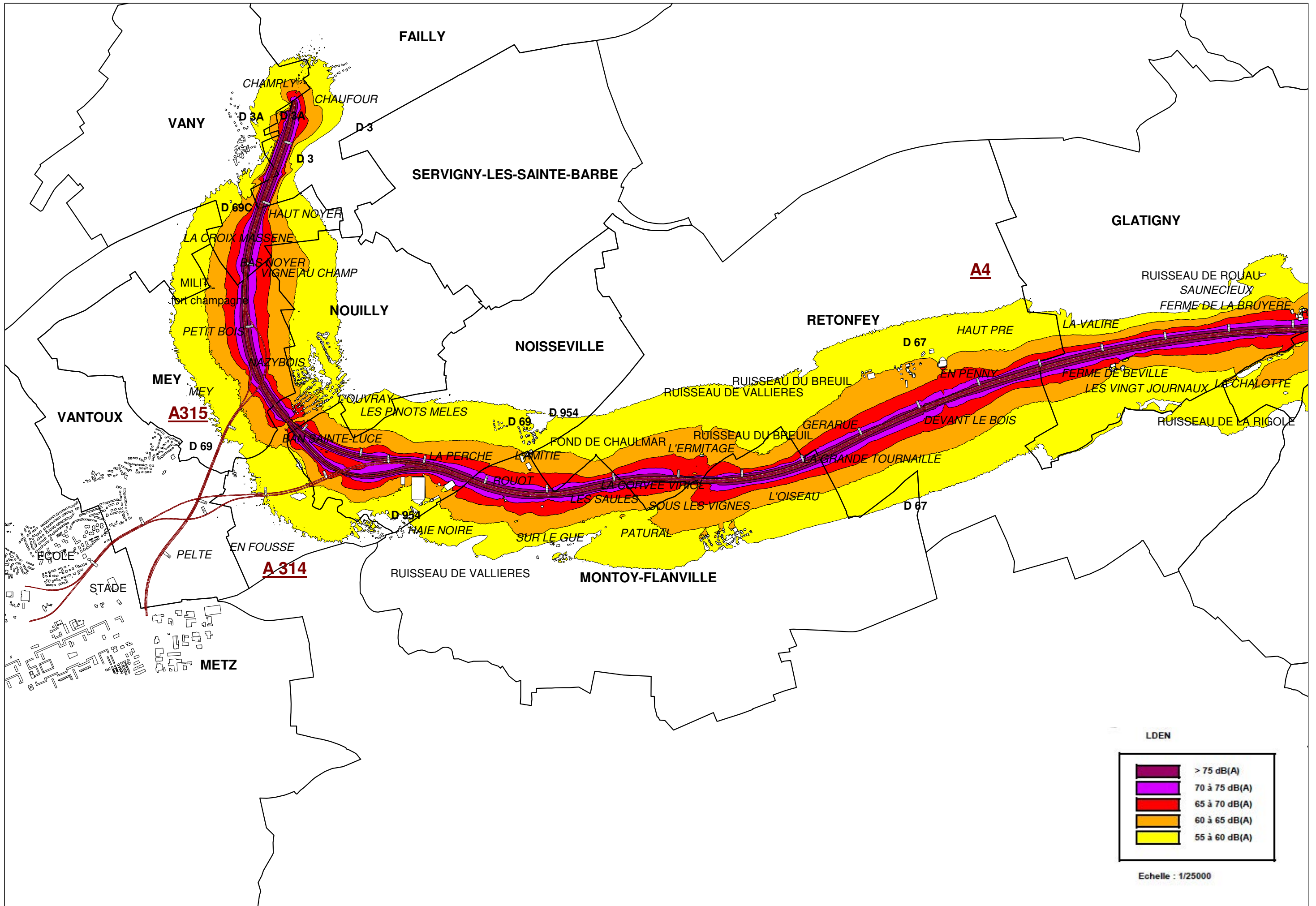
LDEN

	> 75 dB(A)
	70 à 75 dB(A)
	65 à 70 dB(A)
	60 à 65 dB(A)
	55 à 60 dB(A)

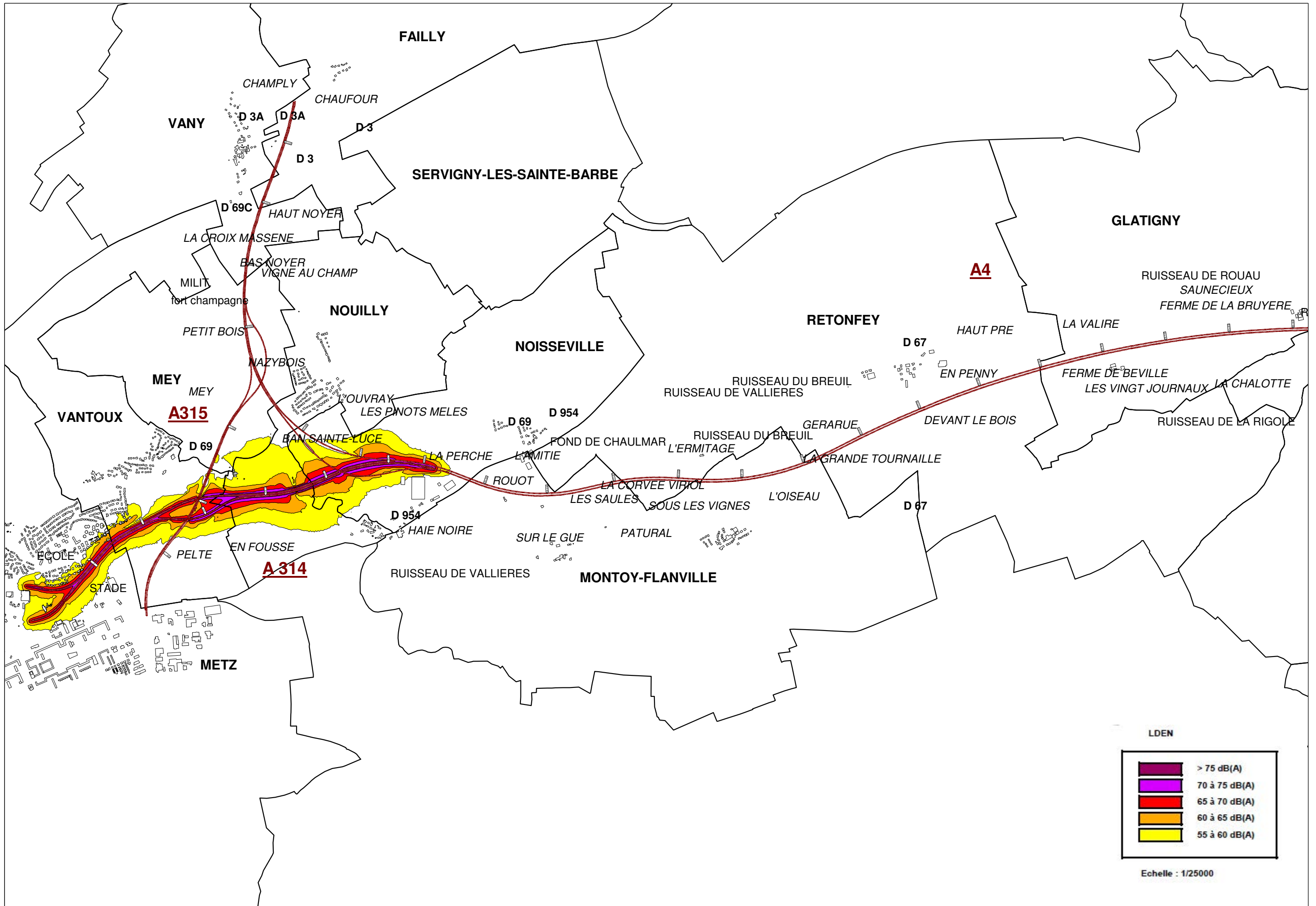
Echelle : 1/25000



Echelle : 1/25000



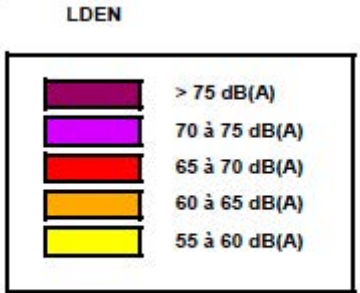
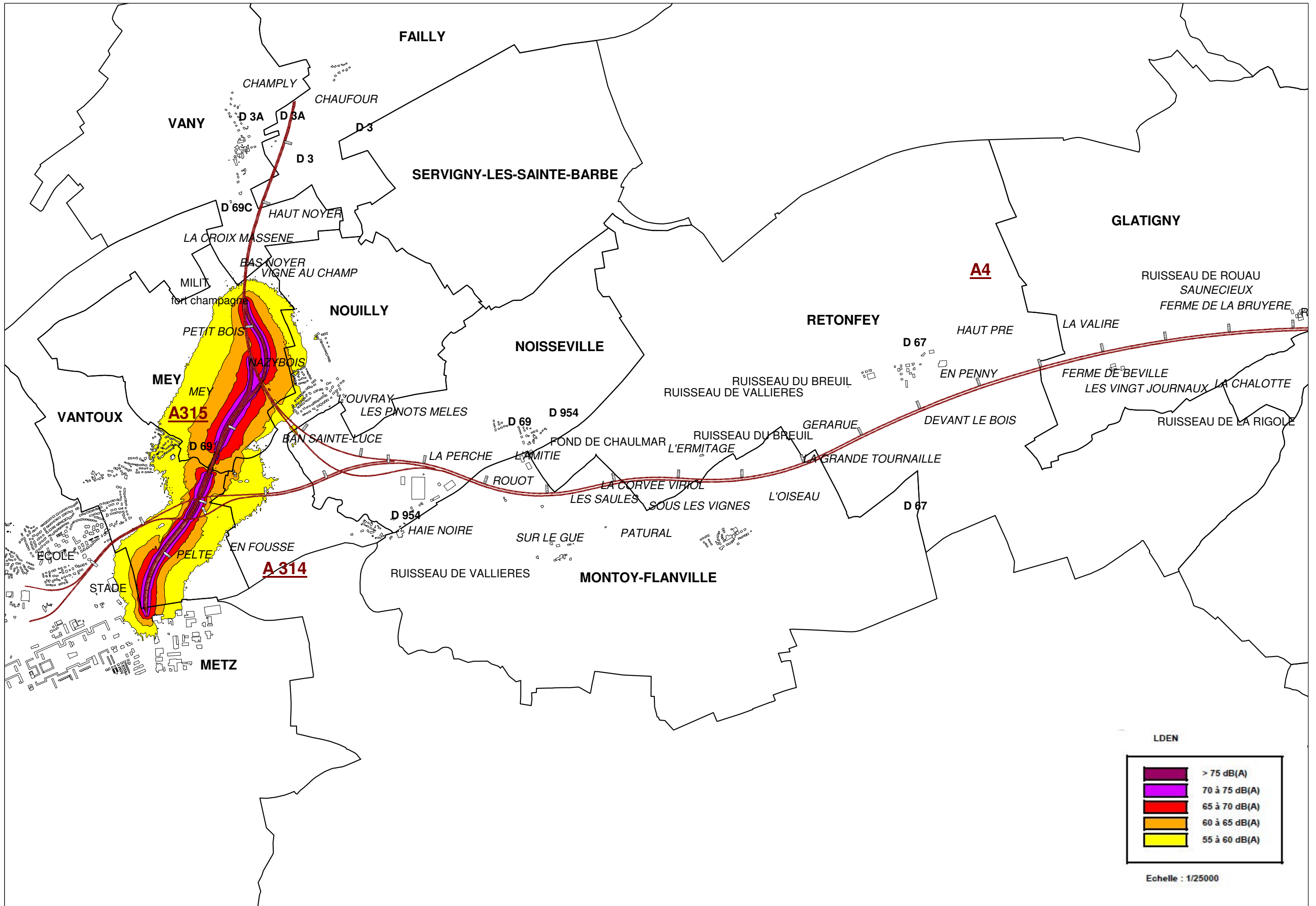
Echelle : 1/25000



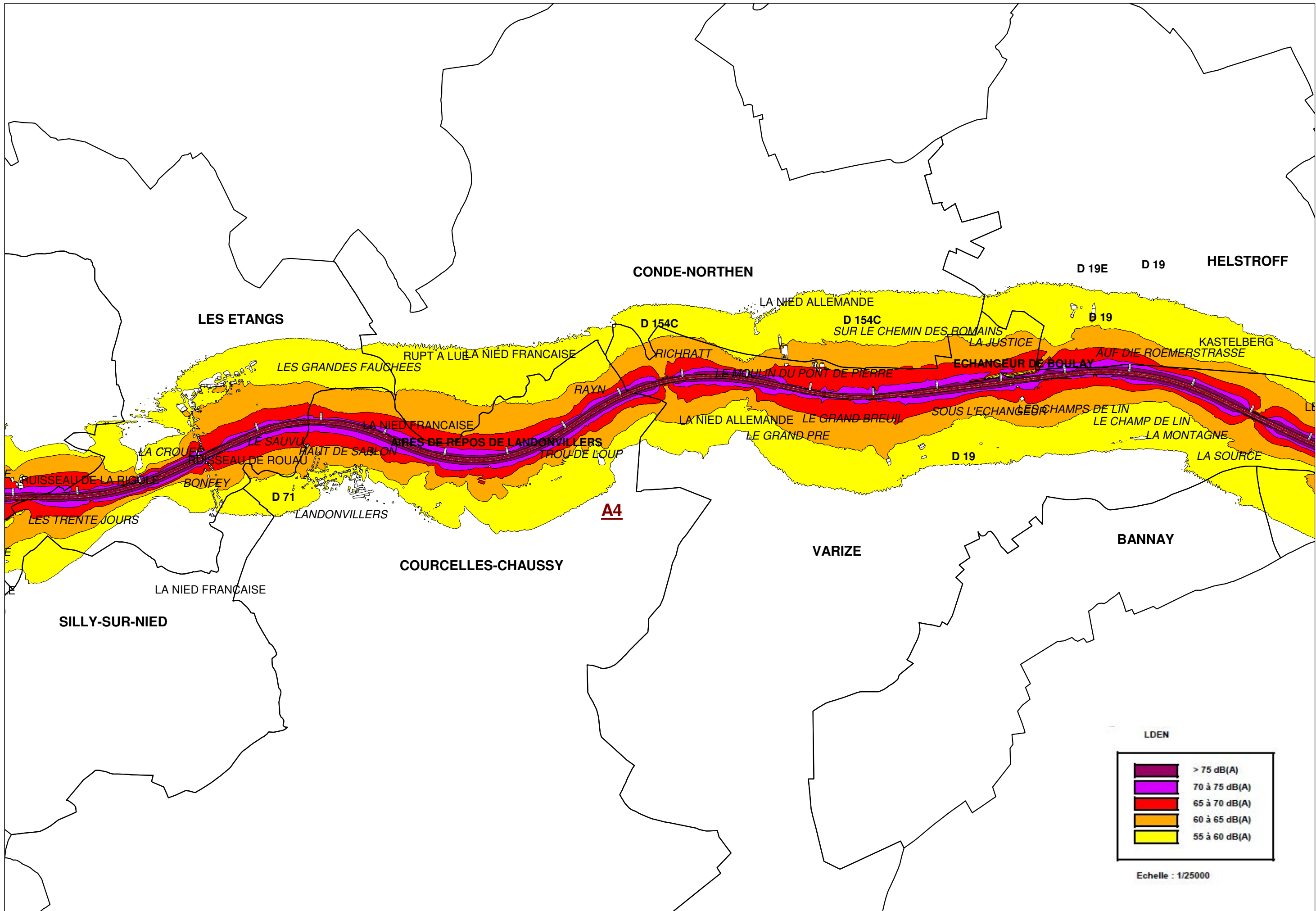
LDEN

	> 75 dB(A)
	70 à 75 dB(A)
	65 à 70 dB(A)
	60 à 65 dB(A)
	55 à 60 dB(A)

Echelle : 1/25000



Echelle : 1/25000



LES ETANGS

CONDE-NORTHEN

D 19E

D 19

HELSTROFF

LA NIED ALLEMANDE

D 154C
SUR LE CHEMIN DES ROMAINS

D 19

LES GRANDES FAUCHEES

RUPT A LUË LA NIED FRANCAISE

RICHRATT

LA JUSTICE

KASTELBERG

ECHANGEUR DE BOULAY

AUF DIE ROEMERSTRASSE

RAYN

LE MOULIN DU PONT DE PIERRE

LA NIED FRANCAISE

LA NIED ALLEMANDE

LE GRAND BREUIL

SOUS L'ECHANGEUR

CHAMPS DE LIN

LE CHAMP DE LIN

LA MONTAGNE

LA CROUE

HAUT DE SABLON

AIRES DE REPOS DE LANDONVILLERS

TROU DE LOUP

LE GRAND PRE

D 19

LA SOURCE

RUISSEAU DE LA RIGOLE

RUISSEAU DE ROUAU

D 71

LANDONVILLERS

A4

VARIZE

BANNAY

SILLY-SUR-NIED

COURCELLES-CHAUSSY

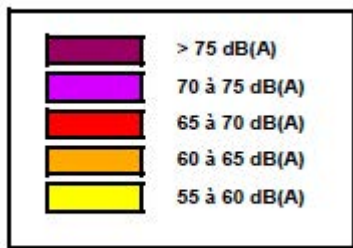
LA NIED FRANCAISE

LDEN

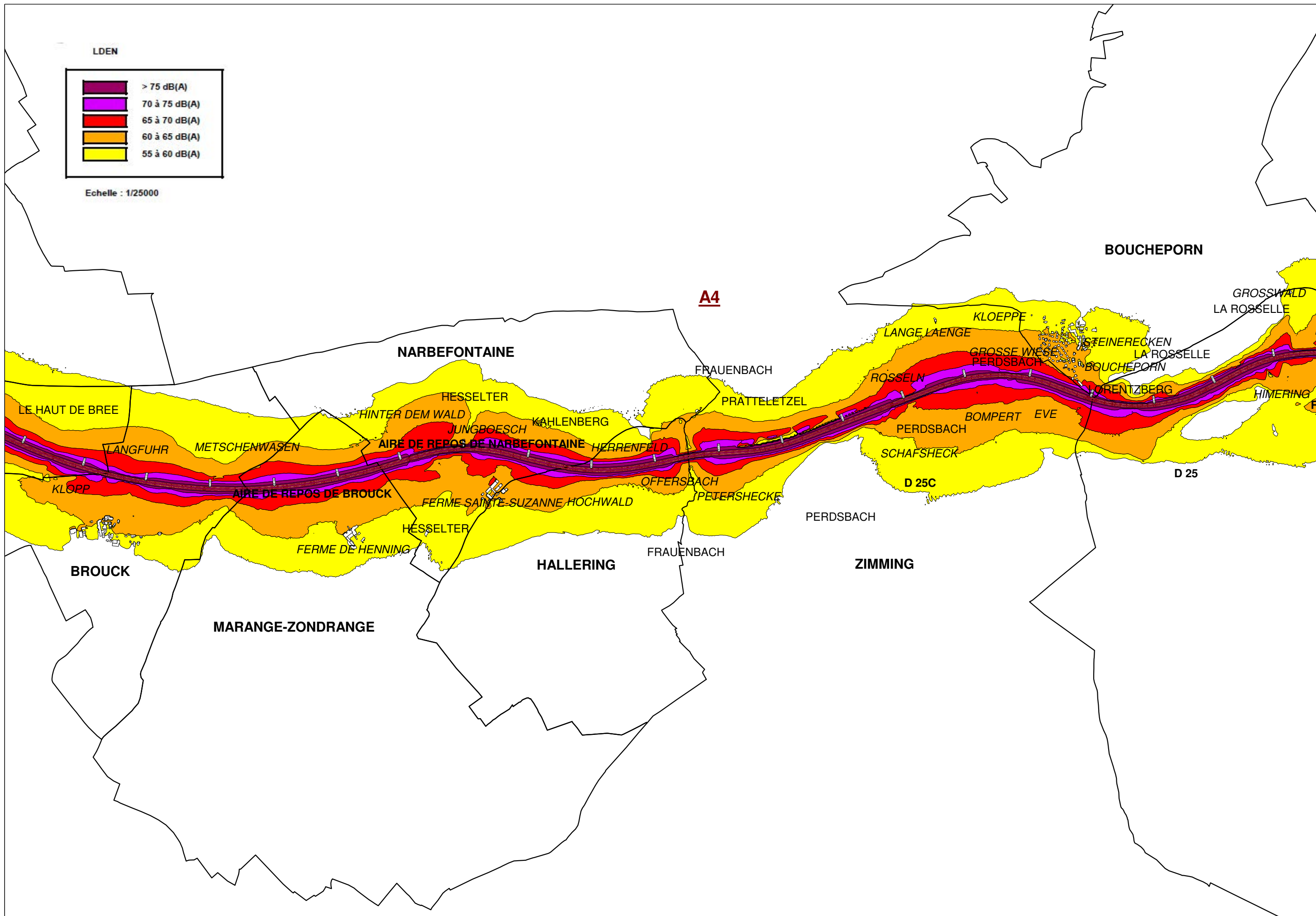
	> 75 dB(A)
	70 à 75 dB(A)
	65 à 70 dB(A)
	60 à 65 dB(A)
	55 à 60 dB(A)

Echelle : 1/25000

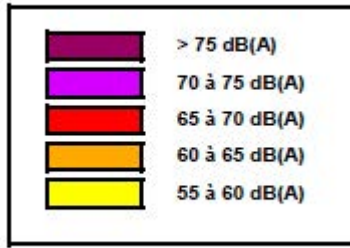
L DEN



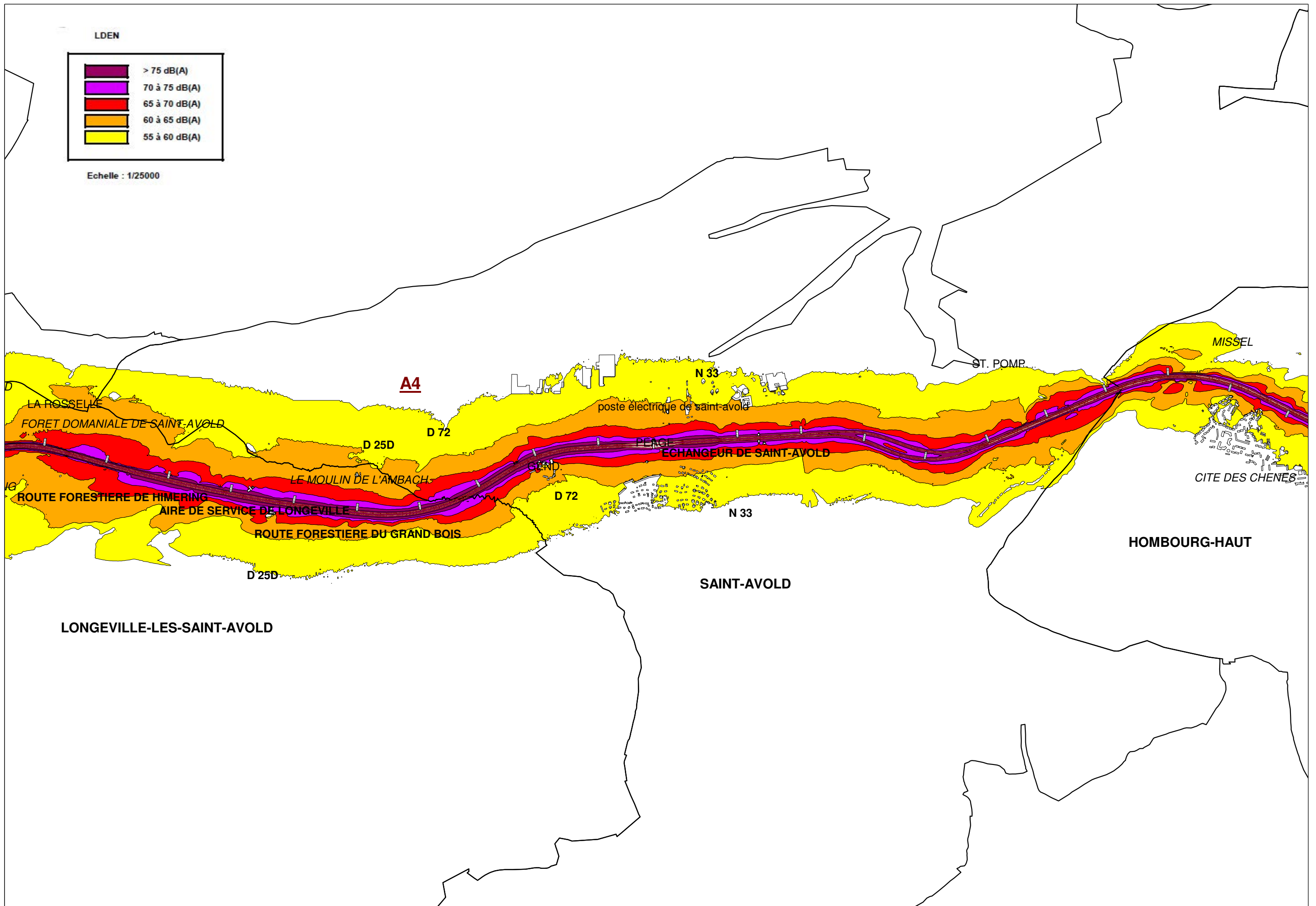
Echelle : 1/25000

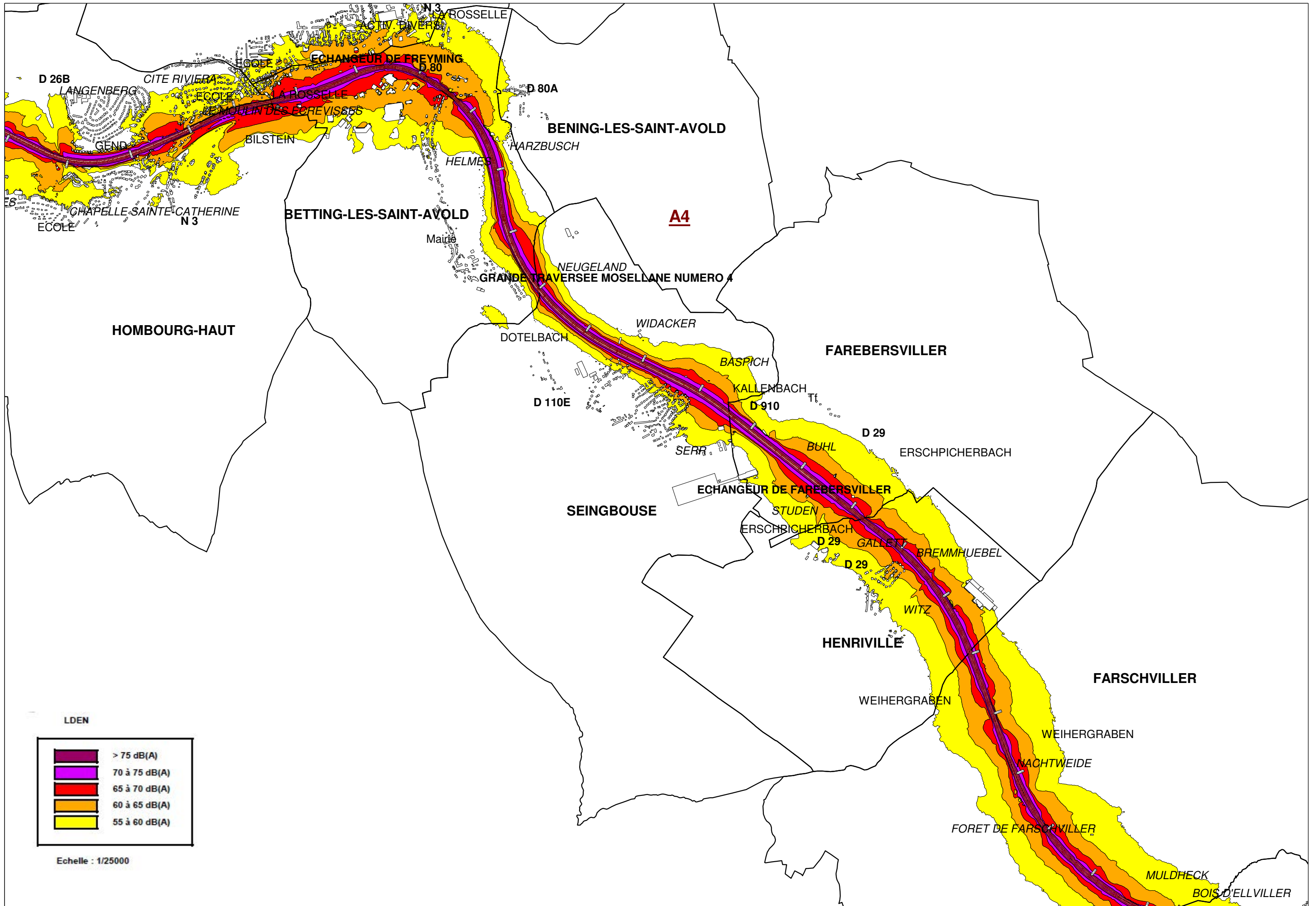


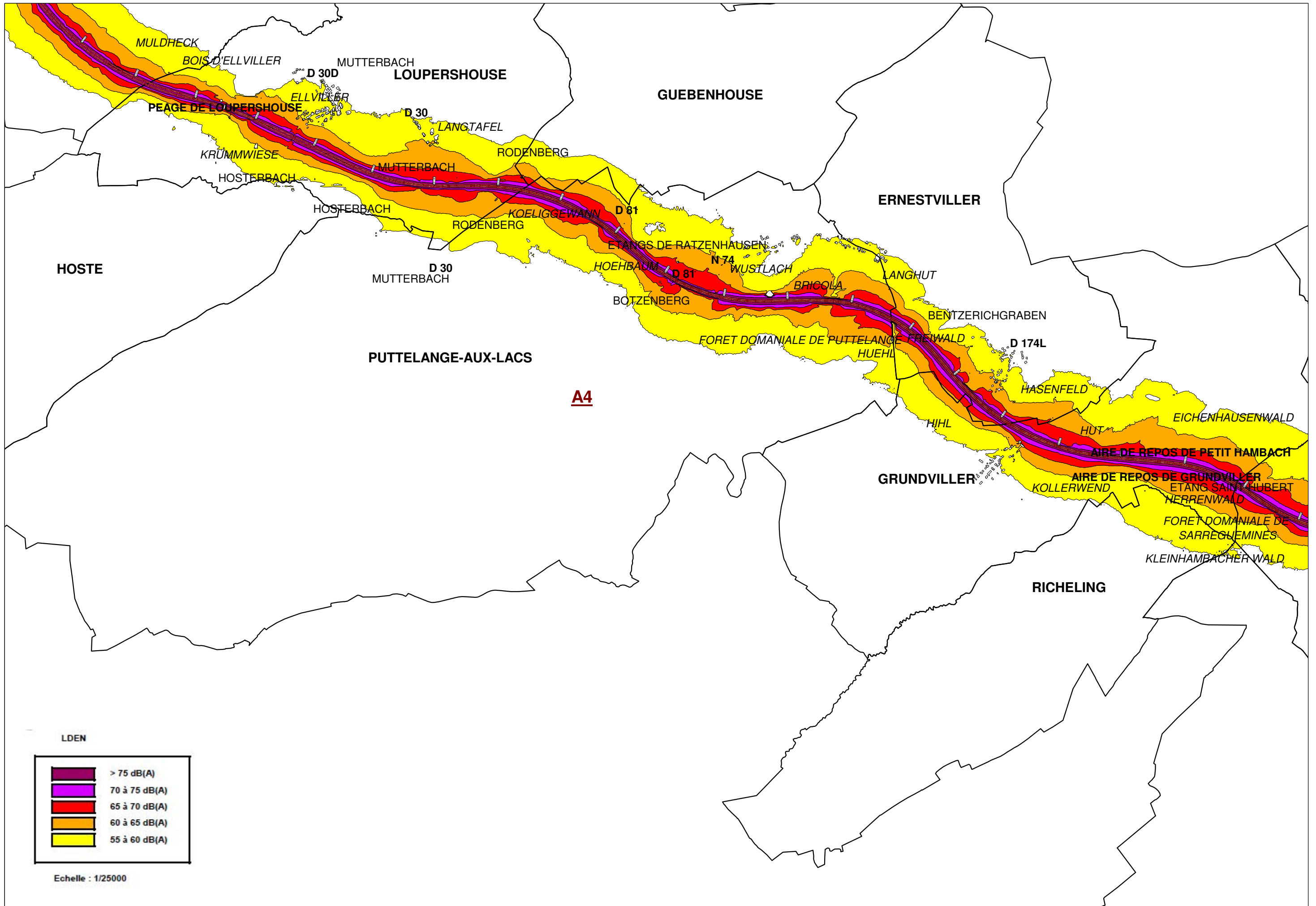
L DEN



Echelle : 1/25000







MULDHECK

BOIS D'ELLVILLER

MUTTERBACH

LOUPERSHOUSE

GUEBENHOUSE

PEAGE DE LOUPERSHOUSE

ELLVILLER

D 30

LANGTAFEL

KRÜMMWIESE

RODENBERG

MUTTERBACH

ERNESTVILLER

HOSTE

HOSTERBACH

HOSTERBACH

RODENBERG

D 81

ETANGS DE RATZENHAUSEN

D 30

HOEHBAUM

N 74

LANGHUT

PUTTELANGE-AUX-LACS

A4

BOTZENBERG

D 81

FORET DOMANIALE DE PUTTELANGE

FREIWALD

D 174L

BRICOLA

BENTZERICHGRABEN

HASENFELD

HIHL

HUT

EICHENHAUSENWALD

GRUNDVILLER

AIRE DE REPOS DE PETIT HAMBACH

AIRE DE REPOS DE GRUNDVILLER

KOLLERWEND

FORET DOMANIALE DE SARREGUEMINES

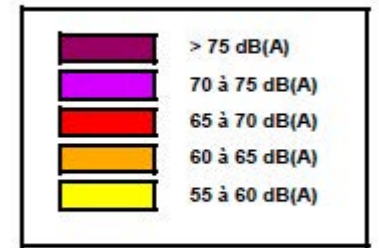
KLEINHAMBACHER WALD

RICHELING

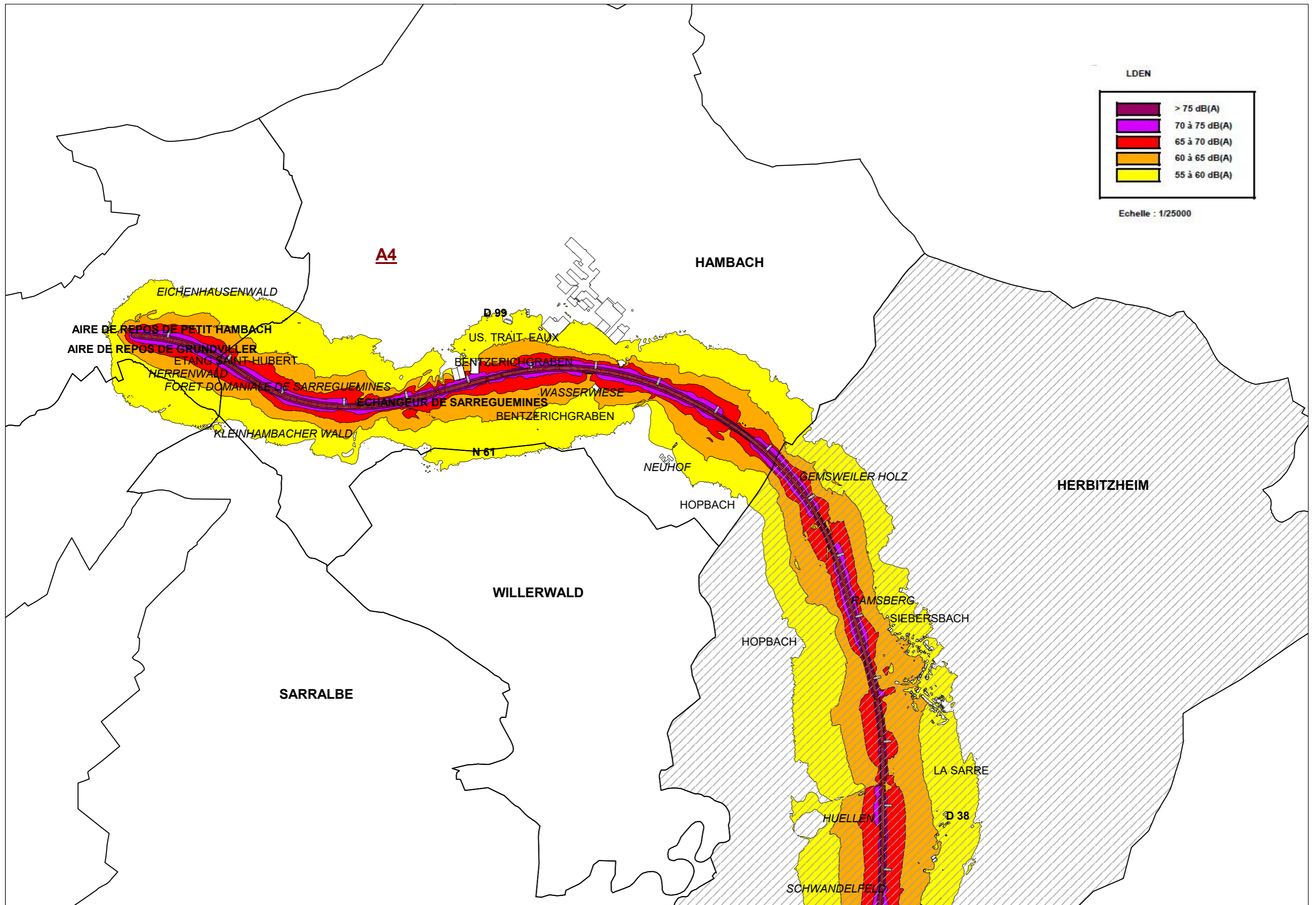
ETANG SAINT HUBERT

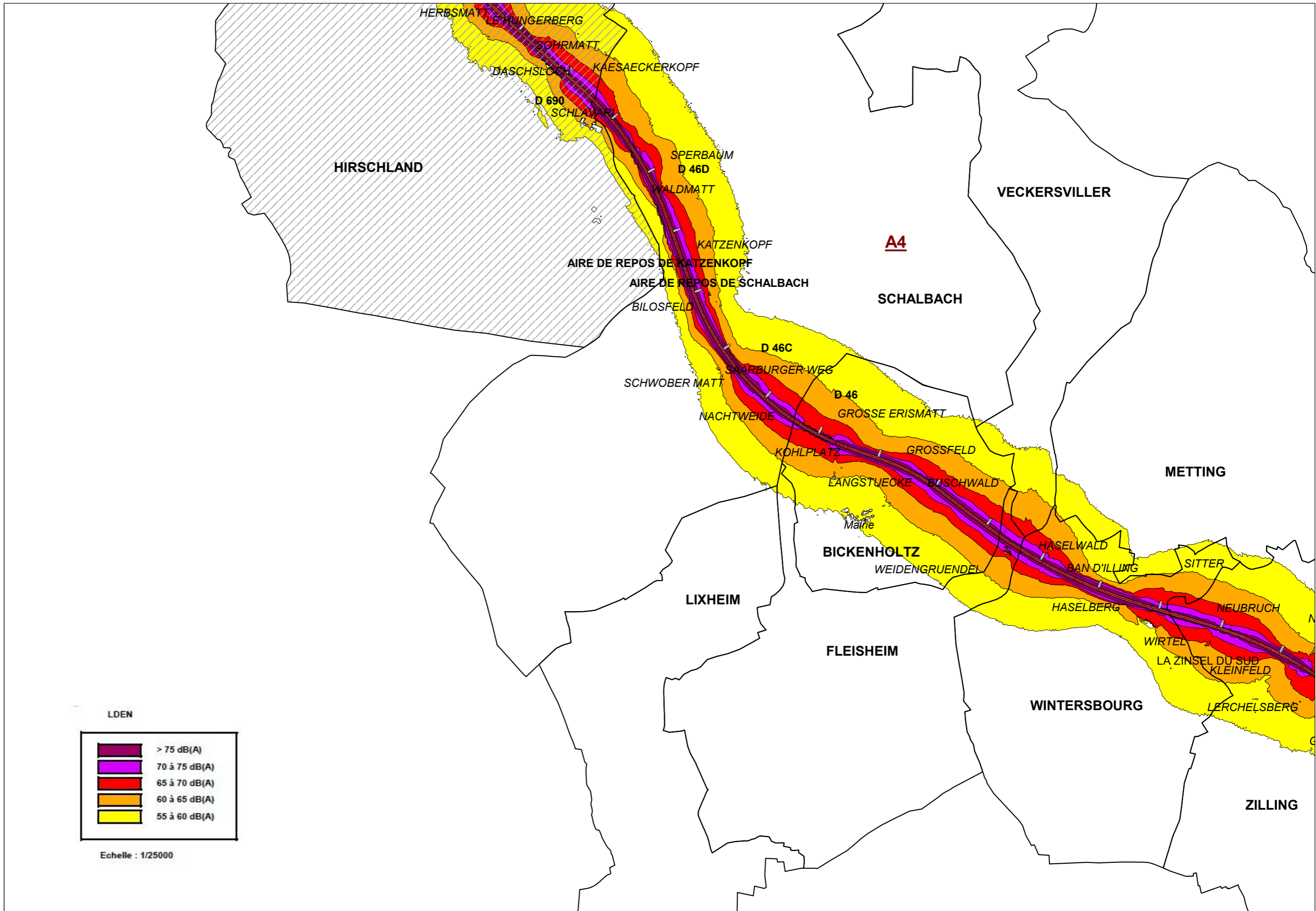
HERRENWALD

LDEN



Echelle : 1/25000





LDEN

	> 75 dB(A)
	70 à 75 dB(A)
	65 à 70 dB(A)
	60 à 65 dB(A)
	55 à 60 dB(A)

Echelle : 1/25000

